

FRONTIER SPIRIT 181,000 DWT Bulk Carrier 23

[Contents](#)

[By Builder](#)

[By Ship Type](#)



FRONTIER SPIRIT 181,000 DWT Bulk Carrier 23

Contents By Builder By Ship Type

Japan Marine United Corporation (JMU) delivered “FRONTIER SPIRIT”, 181,000 DWT Bulk Carrier, at its Ariake Shipyard on 6th October 2023.

Features

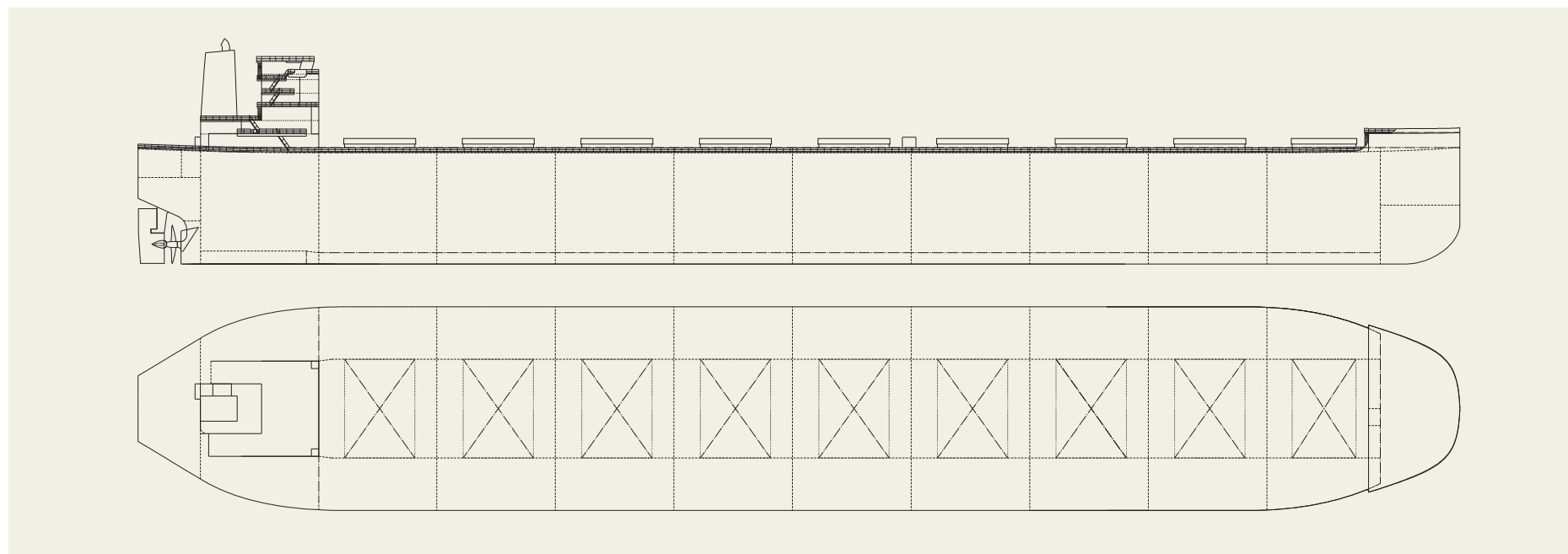
1. This is the newly developed Dunkirkmax type bulk carrier, called “N181BC,” which has larger deadweight and cargo hold capacity suitable for loading bulk coal and iron ore in its nine cargo holds, achieved by JMU’s expertise and vast experience.
2. The Vessel has an optimal hull shape that pursues low resistance and high efficiency using our latest analysis technology, and has also optimized our proprietary energy-saving devices such as Super Stream Duct®, SURF-BULB®, and ALV-Fin®

3. The Energy Efficiency Design Index (EEDI) of the subject Vessel has achieved Phase 3 (30% reduction from the reference line) by application of the optimal hull shape and latest energy saving technologies. This challenge will contribute to green environment by its eco-friendly

- performance.
4. Furthermore, a unique bow shape, LEADGE-Bow®, can reduce the added resistance due to waves, and the well-refined shape of the superstructure can attain low wind resistance.

PRINCIPAL PARTICULARS

Length (o.a.)	292.00 m	Deadweight.....	181,577
Breadth (mld.).....	45.00 m	Main engine	MAN B&W 7S60ME-C10.6-HPSCR
Depth (mld.).....	24.55 m	Complement.....	25
Draft (mld.).....	16.50 m	Classification.....	NK
Gross tonnage.....	93,367	Builder.....	JMU



CAPE BROLGA 211,000 DWT Bulk Carrier 24

[Contents](#)

[By Builder](#)

[By Ship Type](#)



CAPE BROLGA 211,000 DWT Bulk Carrier 24[Contents](#)[By Builder](#)[By Ship Type](#)

Japan Marine United Corporation has delivered “CAPE BROLGA”, the second J-Series 211,000 DWT Bulk Carrier at its Tsu Shipyard on 29th September 2021.

Features

1. This is the newly developed Newcastlemax bulk carrier of J-Series, called J211BC, which is successful in both economical and environmentally friendly design.
2. This Vessel has larger deadweight and cargo hold capacity suitable for bulk coal and iron ore in its 9 cargo holds and has been developed with expertise and vast experience.
3. The SSD[®] (Super Stream Duct[®]) and SURF-BULB[®] equipped fore and aft of its propeller respectively, greatly improve the propulsion performance. ALV-Fin[®] (Ad-

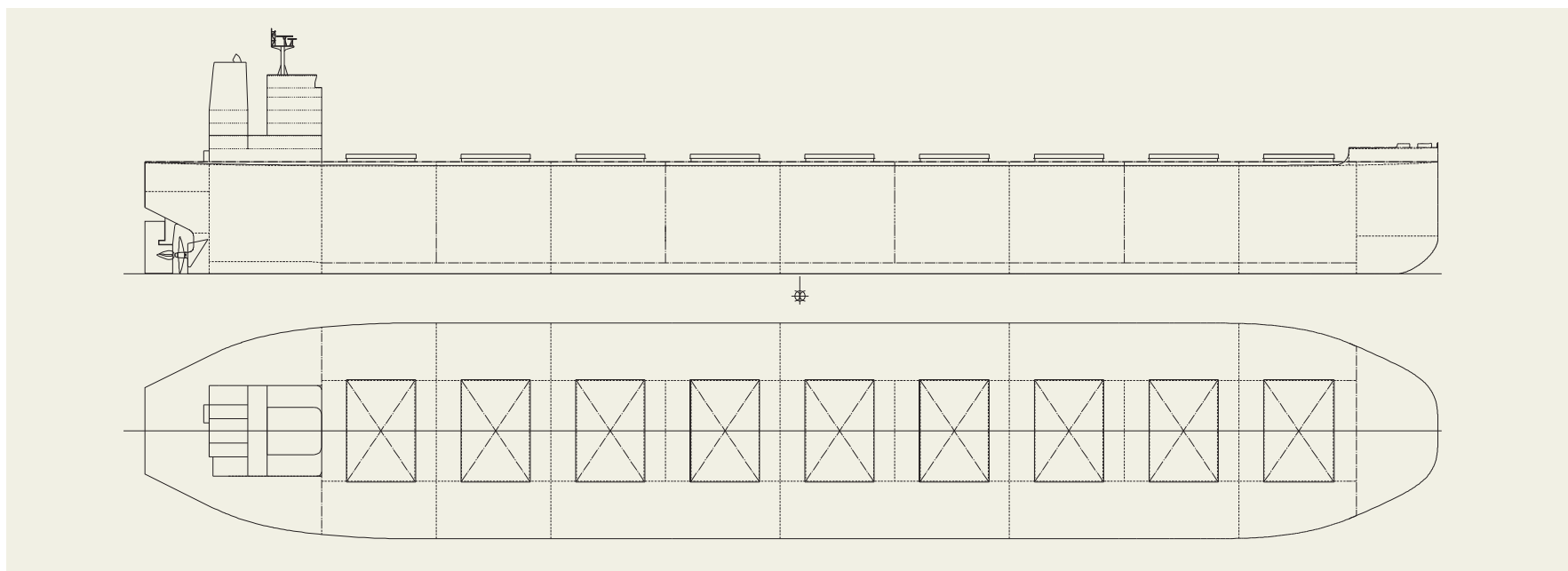
vanced Low Viscous Resistance Fin) equipped fore of its propeller controls stern flow to get better propulsive efficiency. Furthermore, unique bow shape of LEADGE-Bow[®] can reduce the added resistance due to waves and well-refined shape of superstructure can attain low wind resistance. This Vessel is also equipped with SOx scrub-

ber, and SCR(Selective Catalytic Reduction) to comply with MARPOL ANNEX VI Regulation 13 (NOx) and attaining NOx Tier III compliance.

4. Corrosion resistant steel (JFE-SIP[®]-CC) developed by JFE Steel Corporation has been applied in part of outside plating, hold frame and inner bottom plating.

PRINCIPAL PARTICULARS

Length (o.a.).....	299.99 m	Deadweight.....	211,982
Breadth (mld.).....	50.00 m	Main engine.....	MAN B&W 7S65ME-C8.5-HPSCR
Depth (mld.).....	25.00 m	Complement.....	28
Draft (mld.).....	18.40 m	Classification.....	NK
Gross tonnage.....	108,605	Builder.....	JMU



WORLD SEAFARER 182,344 DWT Bulk Carrier 25

[Contents](#)
[By Builder](#)
[By Ship Type](#)


PRINCIPAL PARTICULARS

Length (o.a.)	291.92 m	Gross tonnage	93,719	Complement	24
Breadth (mld.)	45.0 m	Deadweight	182,344 t	Classification	Nippon Kaiji Kyokai (NK)
Draft (mld.)	18.20 m	Main engine	MAN B&W 7G60ME-C10.5-EGRBP	Builder	Namura Shipbuilding Co., Ltd.